

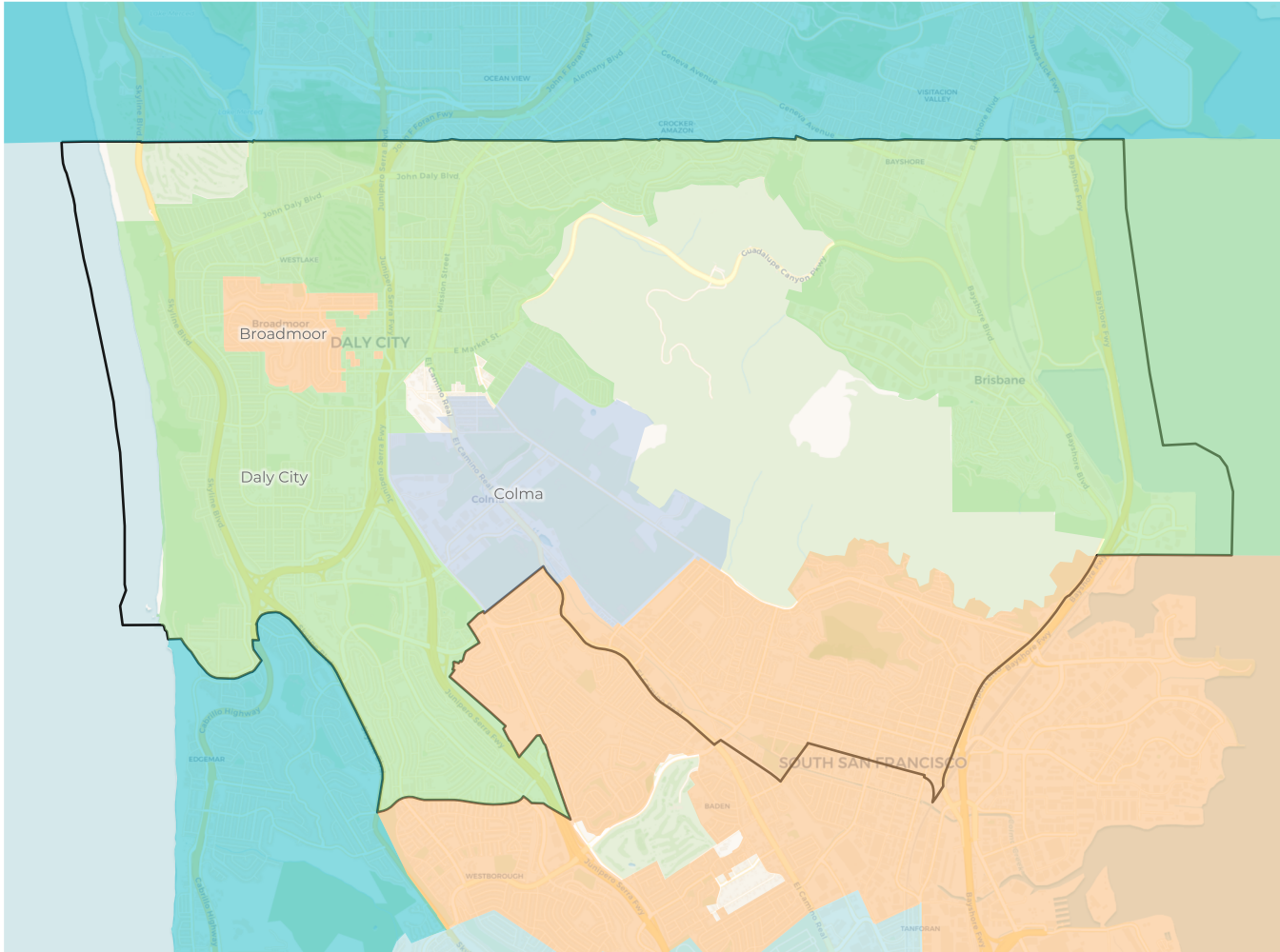
2020 Census

	A	B	C	D	E
Population	148,466	154,895	159,186	157,247	145,623
Deviation	-4,617	1,812	6,103	4,164	-7,460
Deviation %	-3.0%	1.2%	4.0%	2.7%	-4.9%
Other	29,020	64,279	79,345	89,870	68,354
Other %	19.5%	41.5%	49.8%	57.2%	46.9%
Latino	41,918	31,906	33,520	27,228	57,206
Latino %	28.2%	20.6%	21.1%	17.3%	39.3%
Asian	74,290	56,412	44,058	38,185	14,880
Asian %	50.0%	36.4%	27.7%	24.3%	10.2%
Black	3,238	2,298	2,263	1,964	5,183
Black %	2.2%	1.5%	1.4%	1.2%	3.6%

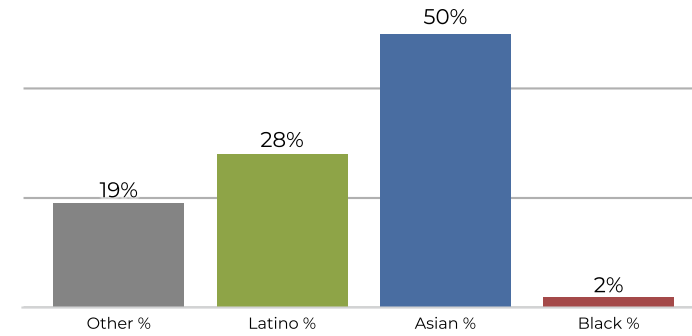
Citizen Voting Age Population (CVAP)

	A	B	C	D	E
Total CVAP	102,079	110,730	100,709	102,037	86,781
Other CVAP	22,651	51,842	60,819	69,852	53,170
Other CVAP %	22.2%	46.8%	60.4%	68.5%	61.3%
Latino CVAP	23,163	19,624	14,233	12,132	20,526
Latino CVAP %	22.7%	17.7%	14.1%	11.9%	23.7%
Asian CVAP	52,874	37,162	23,657	18,422	8,205
Asian CVAP %	51.8%	33.6%	23.5%	18.1%	9.5%
Black CVAP	3,391	2,102	2,000	1,631	4,880
Black CVAP %	3.3%	1.9%	2.0%	1.6%	5.6%

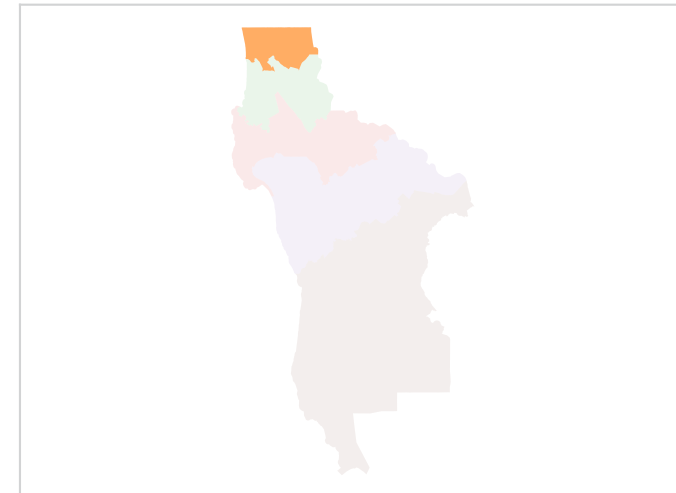
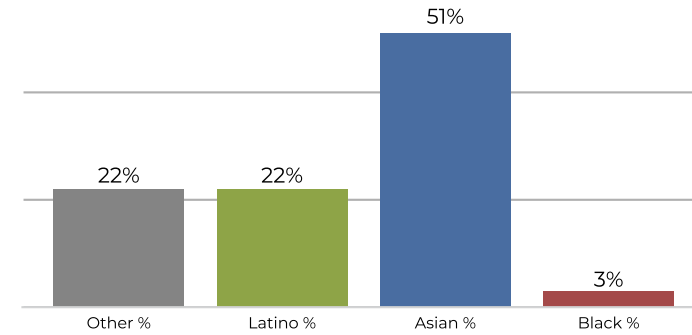
District A



2020 Census



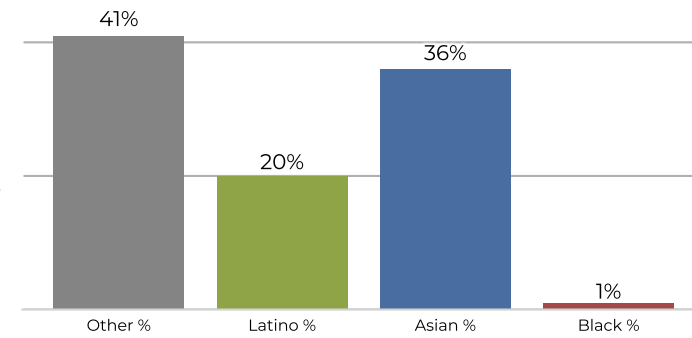
Citizen Voting Age Population



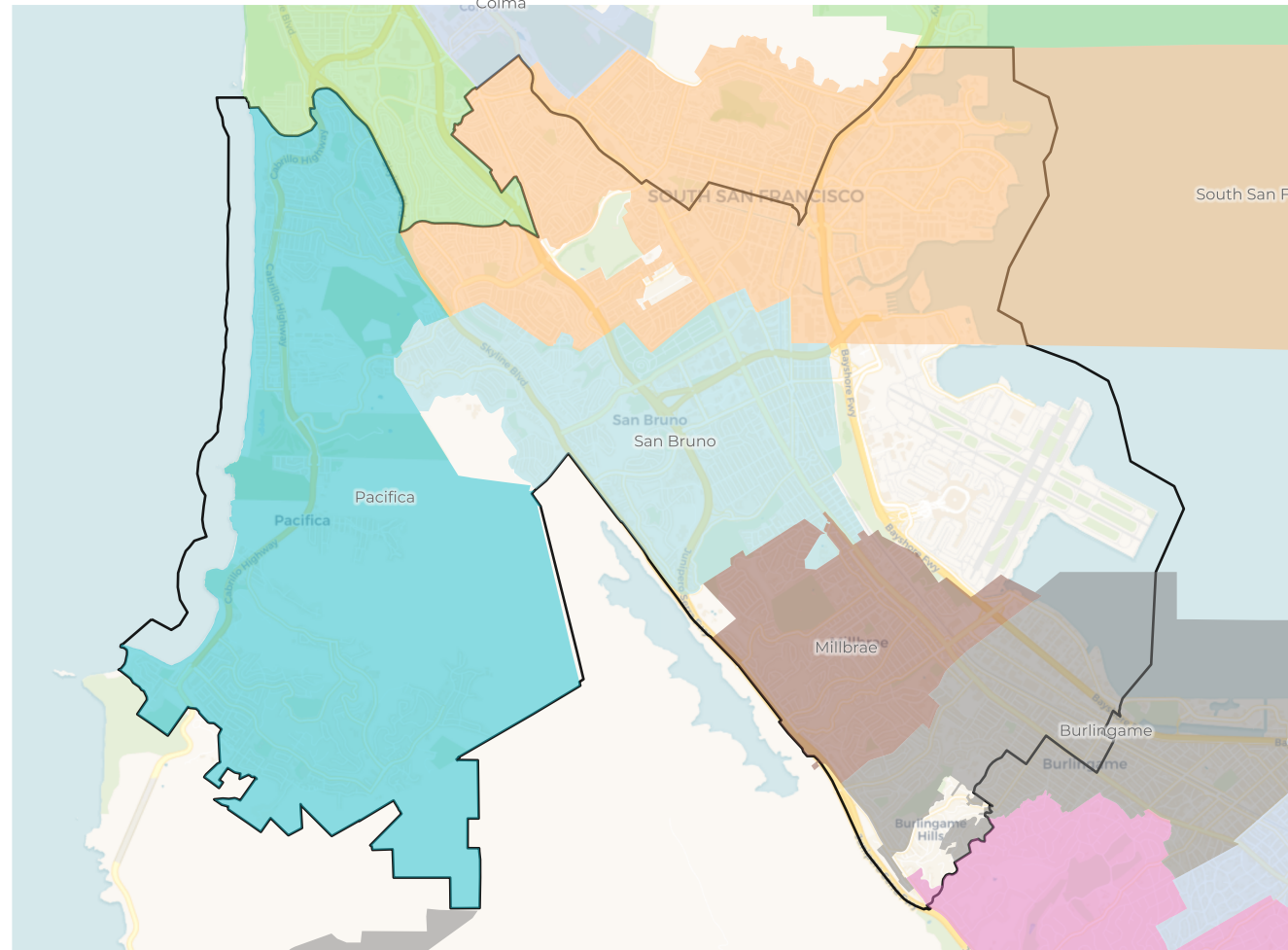
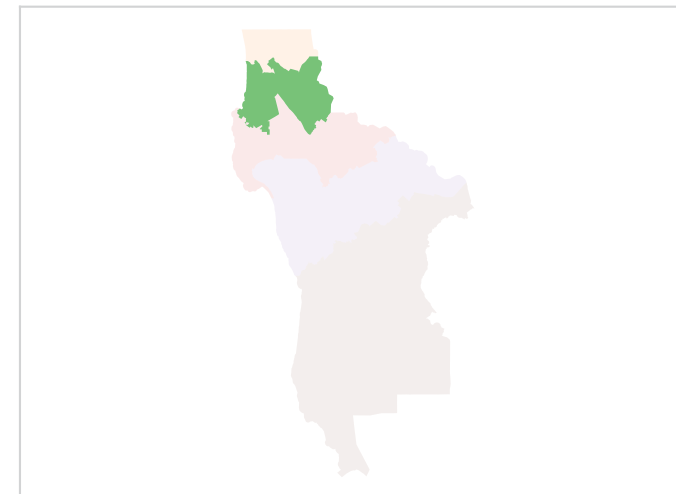
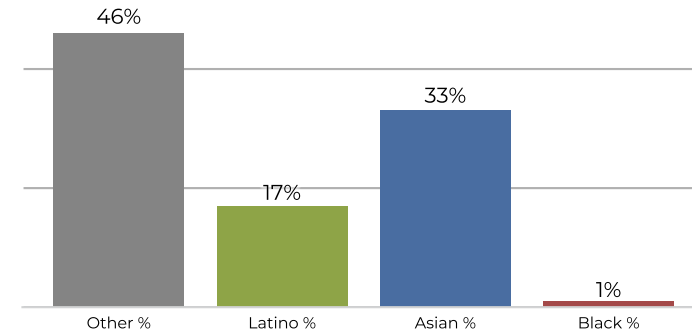
Population	Deviation	Deviation %	Other	Other %	Latino	Latino %	Asian	Asian %	Black	Black %
148,466	-4,617	-3.0%	29,020	19.5%	41,918	28.2%	74,290	50.0%	3,238	2.2%
Total CVAP	Other CVAP	Other CVAP %	Latino CVAP	Latino CVAP %	Asian CVAP	Asian CVAP %	Black CVAP	Black CVAP %		
102,079	22,651	22.2%	23,163	22.7%	52,874	51.8%	3,391	3.3%		

District B

2020 Census

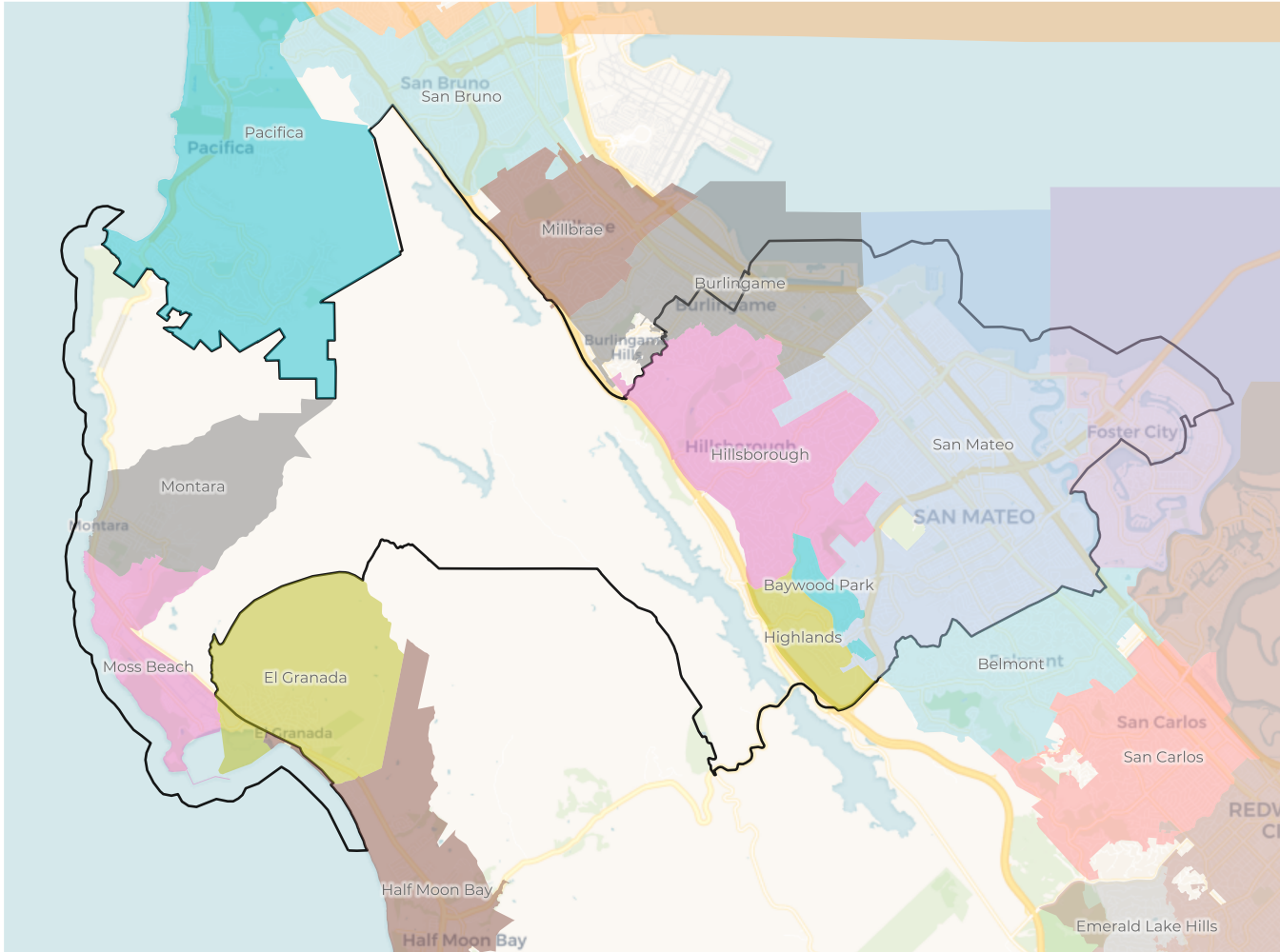


Citizen Voting Age Population

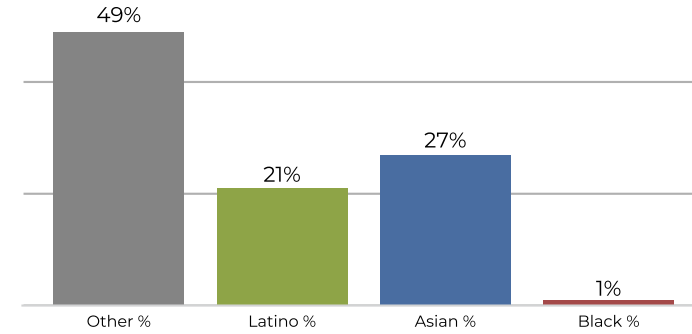


Population	Deviation	Deviation %	Other	Other %	Latino	Latino %	Asian	Asian %	Black	Black %
154,895	1,812	1.2%	64,279	41.5%	31,906	20.6%	56,412	36.4%	2,298	1.5%
Total CVAP	Other CVAP	Other CVAP %	Latino CVAP	Latino CVAP %	Asian CVAP	Asian CVAP %	Black CVAP	Black CVAP %		
110,730	51,842	46.8%	19,624	17.7%	37,162	33.6%	2,102	1.9%		

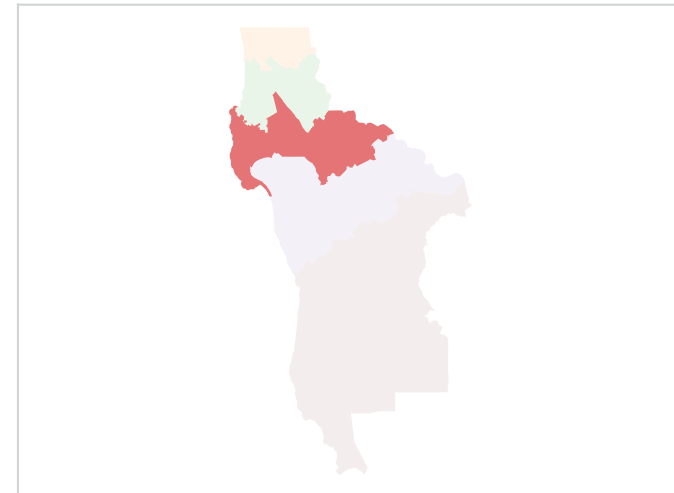
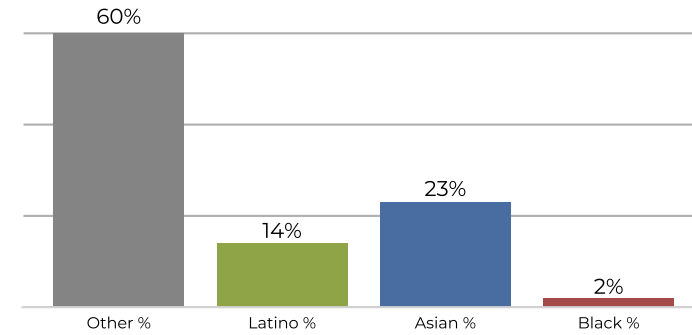
District C



2020 Census

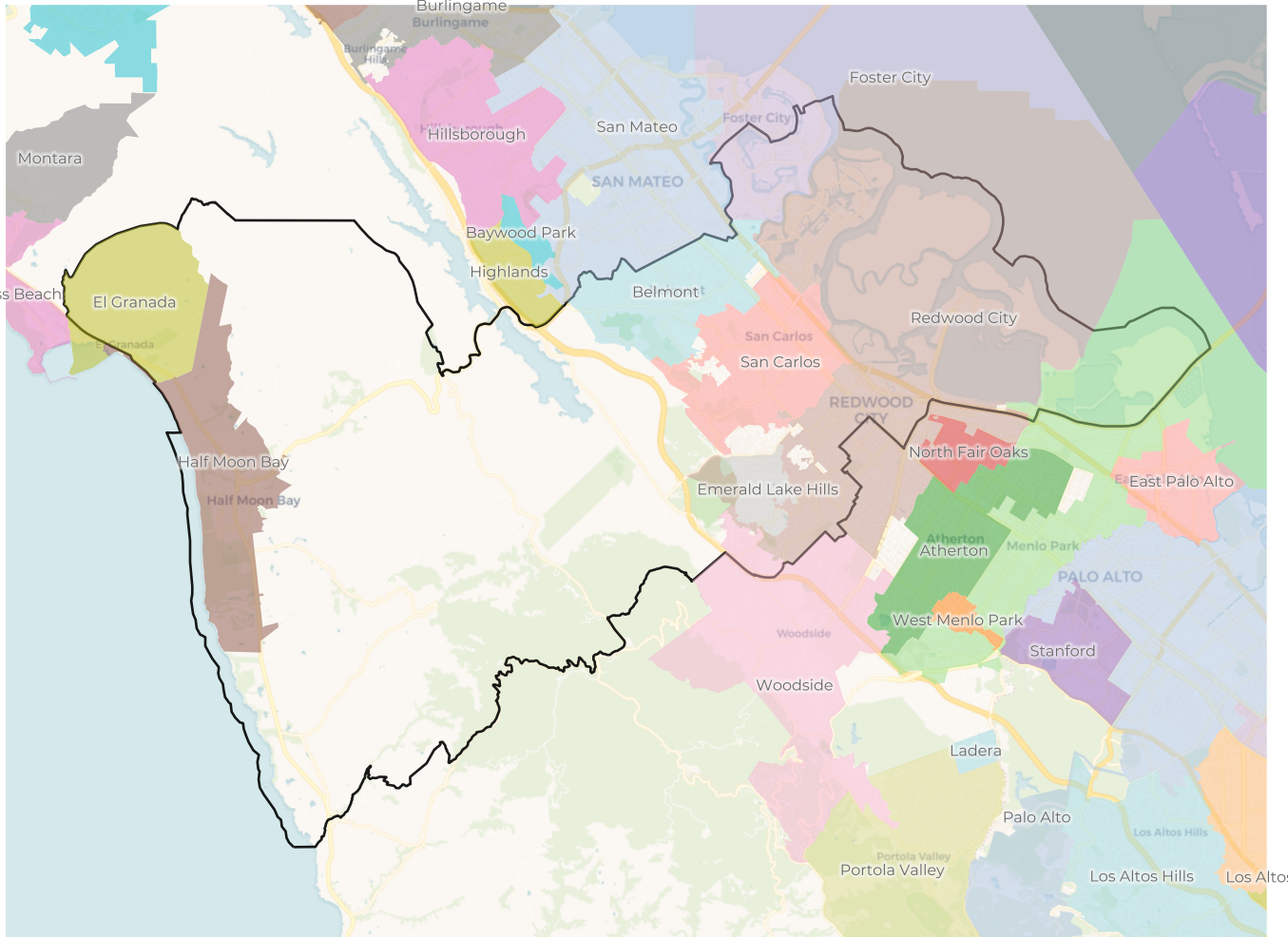


Citizen Voting Age Population

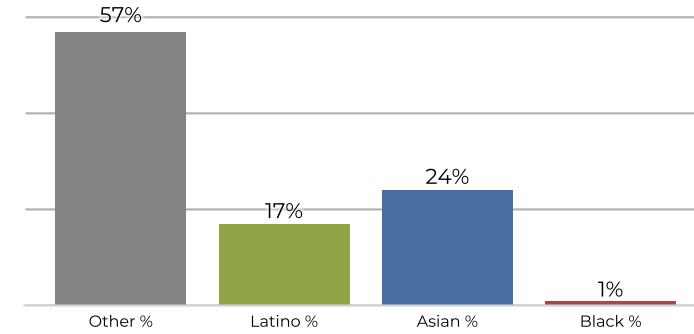


Population	Deviation	Deviation %	Other	Other %	Latino	Latino %	Asian	Asian %	Black	Black %
159,186	6,103	4.0%	79,345	49.8%	33,520	21.1%	44,058	27.7%	2,263	1.4%
Total CVAP	Other CVAP	Other CVAP %	Latino CVAP	Latino CVAP %	Asian CVAP	Asian CVAP %	Black CVAP	Black CVAP %		
100,709	60,819	60.4%	14,233	14.1%	23,657	23.5%	2,000	2.0%		

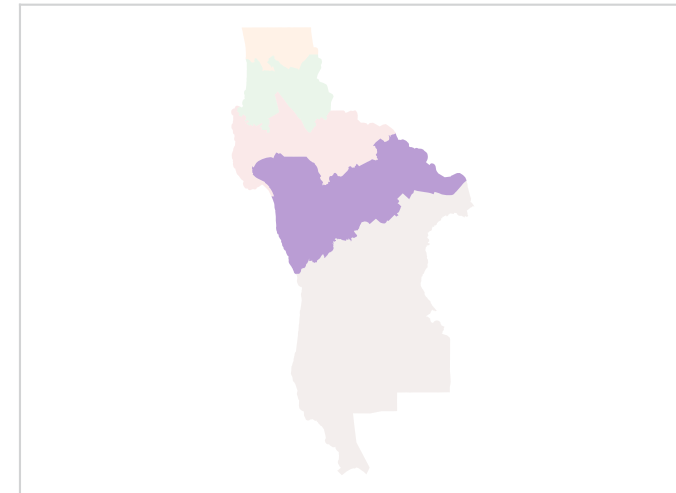
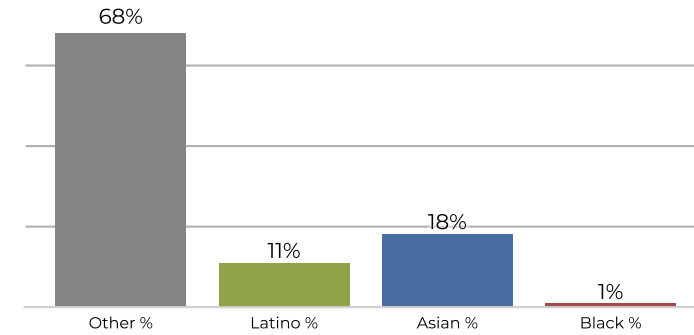
District D



2020 Census

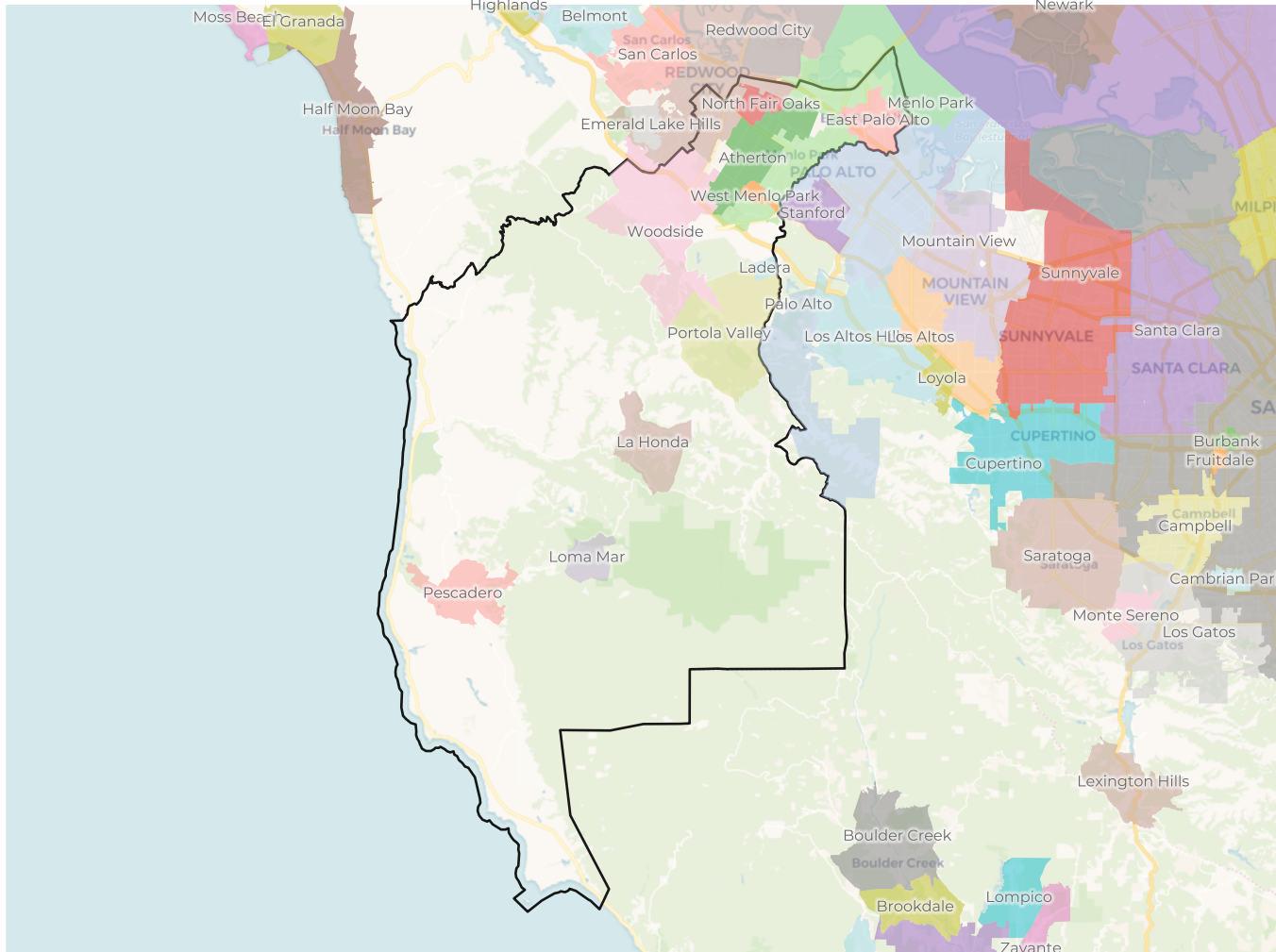


Citizen Voting Age Population

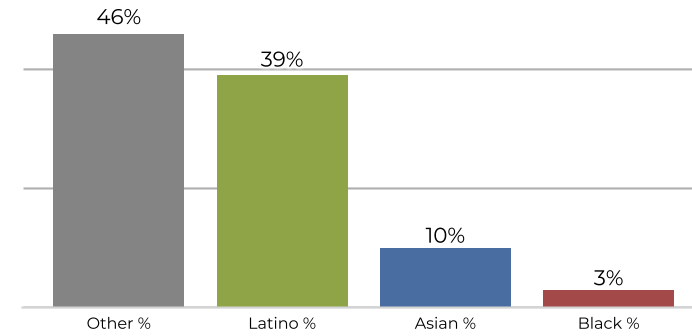


Population	Deviation	Deviation %	Other	Other %	Latino	Latino %	Asian	Asian %	Black	Black %
157,247	4,164	2.7%	89,870	57.2%	27,228	17.3%	38,185	24.3%	1,964	1.2%
Total CVAP	Other CVAP	Other CVAP %	Latino CVAP	Latino CVAP %	Asian CVAP	Asian CVAP %	Black CVAP	Black CVAP %		
102,037	69,852	68.5%	12,132	11.9%	18,422	18.1%	1,631	1.6%		

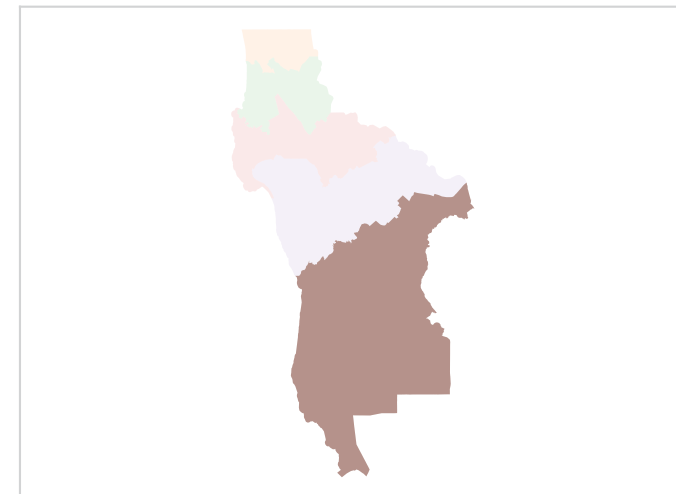
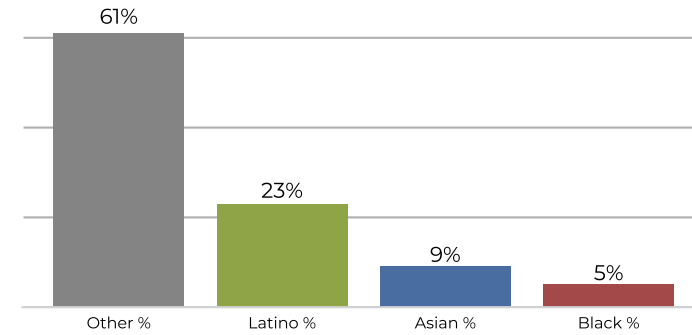
District E



2020 Census



Citizen Voting Age Population



Population	Deviation	Deviation %	Other	Other %	Latino	Latino %	Asian	Asian %	Black	Black %
145,623	-7,460	-4.9%	68,354	46.9%	57,206	39.3%	14,880	10.2%	5,183	3.6%
Total CVAP	Other CVAP	Other CVAP %	Latino CVAP	Latino CVAP %	Asian CVAP	Asian CVAP %	Black CVAP	Black CVAP %		
86,781	53,170	61.3%	20,526	23.7%	8,205	9.5%	4,880	5.6%		